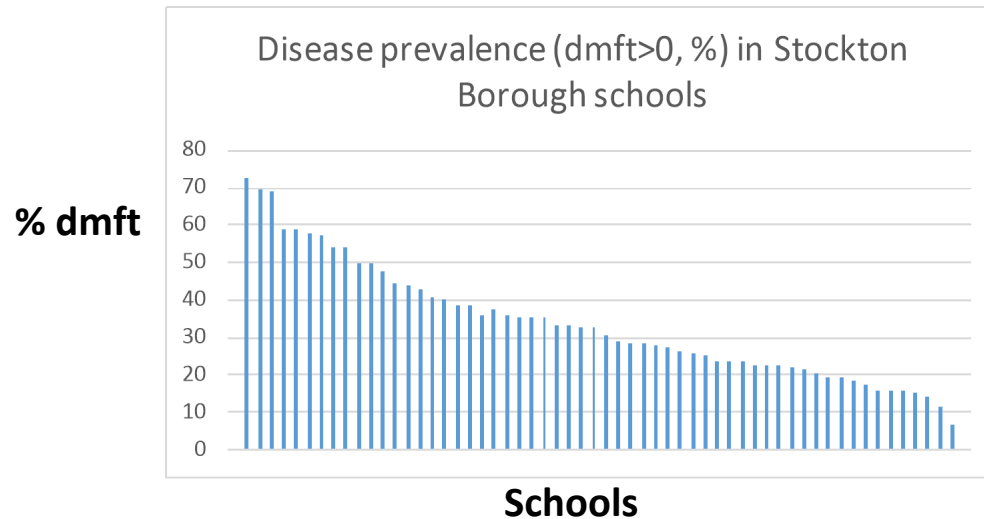


## Dental health in Stockton Borough schools



# Public Health - mitigating the effects of poverty

Sarah Bowman on behalf of SBC Public Health

# Public Health services:

- Seasonal health
- Obesity
- Sexual health
- Substance misuse

# Seasonal health

## Warm Homes Healthy People:

- Targeted at most vulnerable: over 75s, elderly people living alone and people with disabilities / health issues worsening during cold weather
- Information provided by SBC, Public Health and Cleveland Fire Brigade identifies areas of higher-risk populations for excess winter deaths / hospital admissions for cold-related illness
- Partnership work delivering a range of tailored interventions, including:
  - Handyperson Service e.g. draft-proofing
  - Boiler servicing and repairs and emergency heating
  - Energy, fuel debt and benefits advice
  - Home insulation and affordable warmth advice

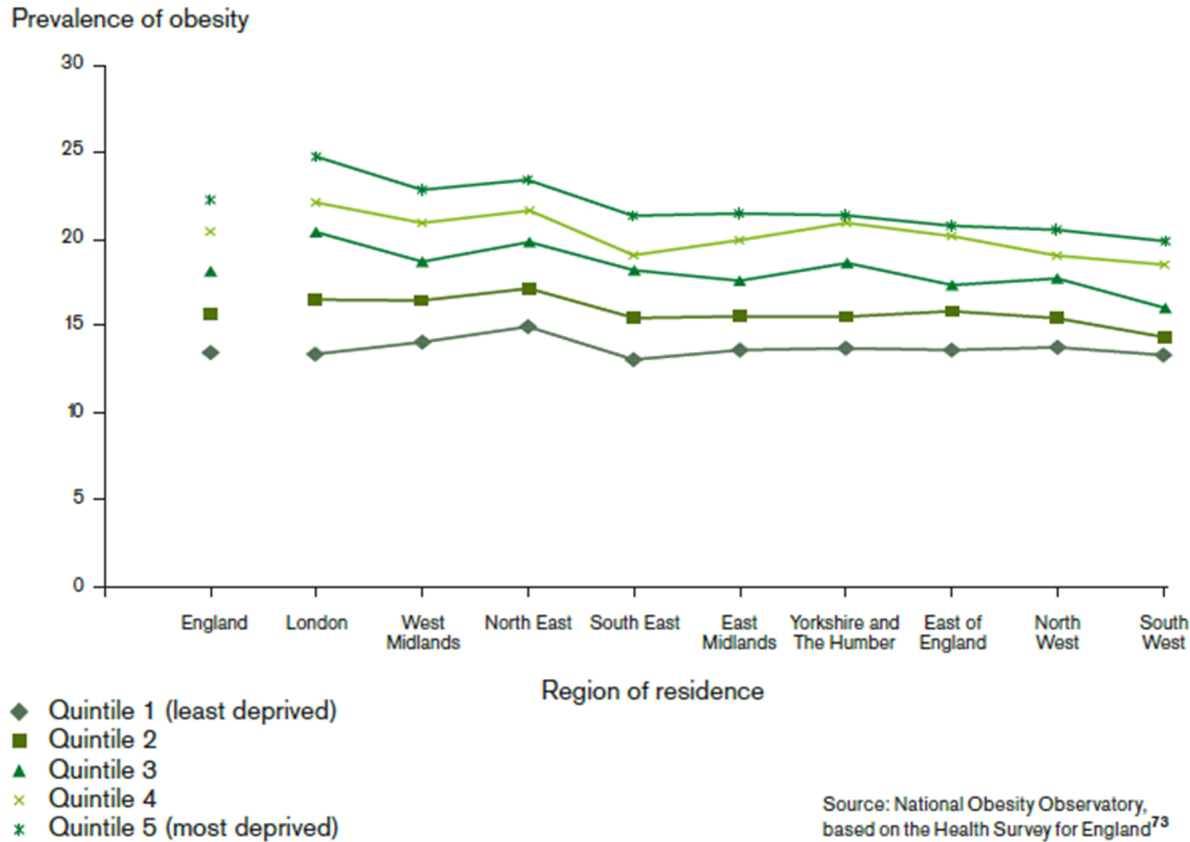
## Draft Seasonal health and Wellbeing Strategy:

- Covers e.g. flu, falls, and fuel poverty



# Obesity

Figure 2.16 Prevalence of obesity (>95th centile) by region and deprivation quintile for children aged 10–11 years, 2007/8



2012/13 data (provisional)

8.36% obese in reception

20.90% obese in year 6

Source: National Obesity Observatory, based on the Health Survey for England<sup>73</sup>



Stockton-on-Tees  
BOROUGH COUNCIL

Source: Marmot (2010)

Health and Wellbeing

Big plans for the health of our people

# Obesity

## Services:

- School Nursing Team – deliver National Child Measurement Programme, support families 1-1 if requested by family
- Morelife (Public Health commissioned) – Tier 2 family-focused weight management service for for overweight / obese 5-17 year olds
- NTHFT Dietetics – 1-1 support for overweight / obese CYP with a co-morbidity e.g. diabetes. Can refer to Morelife

## Key issue:

**Parental participation** is a key factor in prevention and management of childhood obesity, thus **parental recognition of weight problems** is essential. Ipsos Mori study reported parents from lower socio-economic grades are less likely to be able to identify a healthy weight for a child.

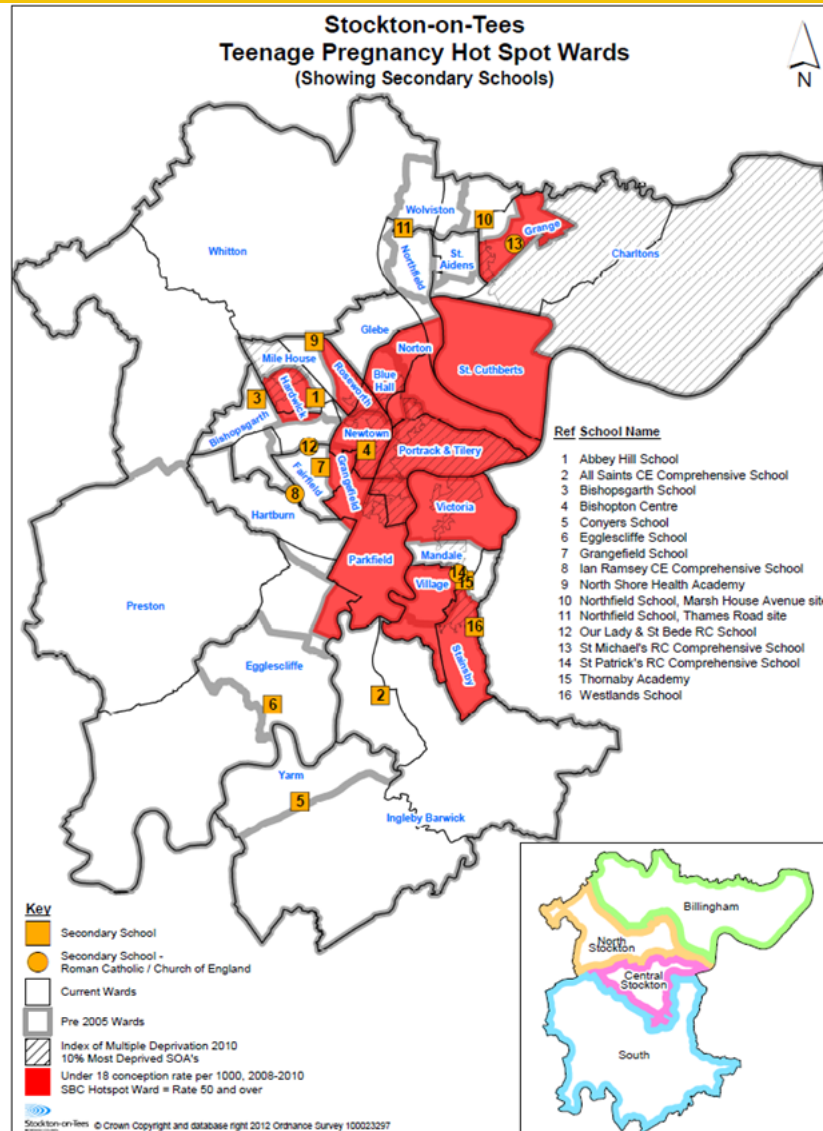


Stockton-on-Tees  
BOROUGH COUNCIL

Health and Wellbeing

Big plans for the health of our people

# Sexual health



Stockton rates fluctuate and are above the national average.

Rate at Q2 2012 = 40 per 1,000 15-17yr olds

# Sexual health

## Current services:

- Risk Taking Behaviour Toolkit – curriculum for secondary schools (sex and relationships, drug and alcohol education)
- Youth Direction - Risk Taking Behaviour Road Show complimenting RTB Toolkit
- Youth Direction - targeted education in schools for cohorts needing extra support
- Alliance Psychological Services “No Worries” project - targeted relationship and sexual health programme for young people
- C-Card scheme across the Borough and Assura sexual health clinics

## Developments:

- Expanding RTB Toolkit for secondary schools, developing Primary RTB Toolkit
- Review school nursing service to ensure the needs of young people / Healthy Child Programme are met
- Tees sexual health needs assessment including mapping outreach provision



# Substance misuse

## Young Person Substance Misuse Service:

- Comprehensive assessment to identify level of risk, informing a care plan
- Structured interventions using a whole-family approach
- Specialist referrals for domestic violence, debt, accommodation or parental substance misuse
- 60 YP currently; at least 60% living in poverty – many have parents receiving benefits / seeking working tax credit due to low income
- Varying school attendance and a number are in the LAC system



Stockton-on-Tees  
BOROUGH COUNCIL

Health and Wellbeing

Big plans for the health of our people



We need to:

Make best use of the data /  
information we have

Ensure services are targeted at  
the most vulnerable

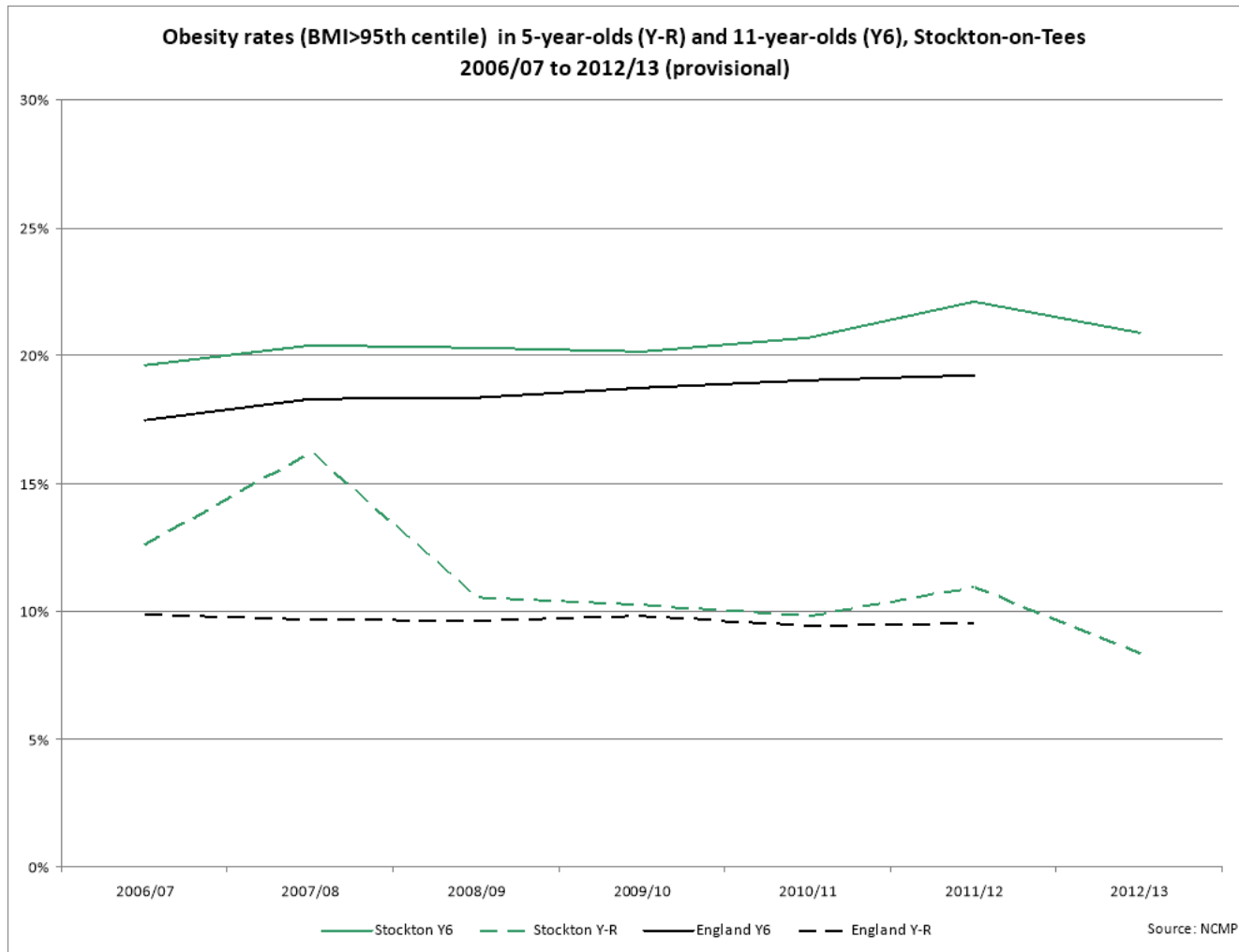
# Additional information

# Obesity

2012/13 data  
(provisional)

8.36% obese  
in reception

20.90% obese  
in year 6



**Stockton-on-Tees**  
BOROUGH COUNCIL

**Health and Wellbeing**

Big plans for the health of our people

# Targeted SBC programmes

## Family Intervention Programme:

- Support families with complex needs, inc. poverty (8hrs a week for 12-18 months)
- Family Support Workers – lead professional for the family, co-ordinate services and provide support, rewards and sanctions to motivate behaviour change
- Supported 46 families in 2012-13; 16 successfully completed plans
- Outcomes include: reductions in A.S.B, criminal activity, improvement in school attendance and employment, reduction in families on child protection and child in need plans and number of LAC
- Currently 30 families (162 individuals)

## Youth Offending Service:

- Holistic assessments for 10-18yr olds found guilty of committing a criminal offence
- Where possible all assessments undertaken with parents/family to involve them in interventions, including substance misuse, offending, victims and restorative justice
- Work closely with specialist young persons substance misuse service and Children and Adolescent Mental Health Services
- Over the previous 12months, worked with 205 CYP
- 14.1% were from Stockton Town Centre, 13.7% Norton North, 10.2% Mandale & Victoria, 10.7% Hardwick



Stockton-on-Tees  
BOROUGH COUNCIL

Health and Wellbeing

Big plans for the health of our people